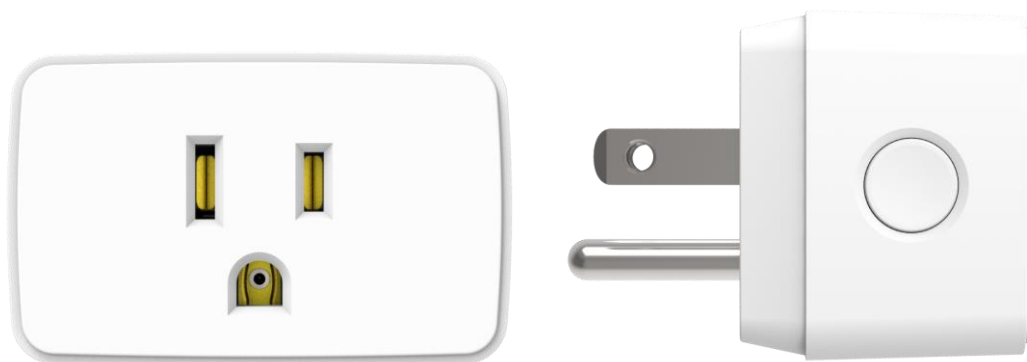




# MANUAL



## WIRELESS SOCKET SWITCH PLUG MYCR-1800

### CONTENTS

---

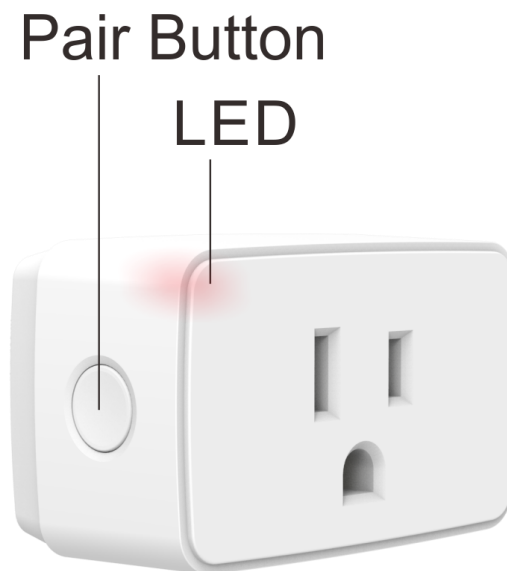
1. Overview and features	Page 2.
2. Pairing / Un-pairing device	Page 3.
3. Operations	Page 5.
4. Specifications	Page 6.

## 1. Overview and features

Transform your electronic devices to wireless control with the wireless socket switch plug by plugging the socket switch into an electrical outlet, plug a device into the socket switch, and control your device using a remote control.

### Main features:

- Compatible to L and M Series.
- 1800W maximum resistive load control.
- Plugs into any regular electrical wall outlet.
- Intuitive, easy set up. Easy to use.
- 32 memories, first in first out storage maintain.
- Scene status memory, create your desired atmosphere.



 Not compatible to:

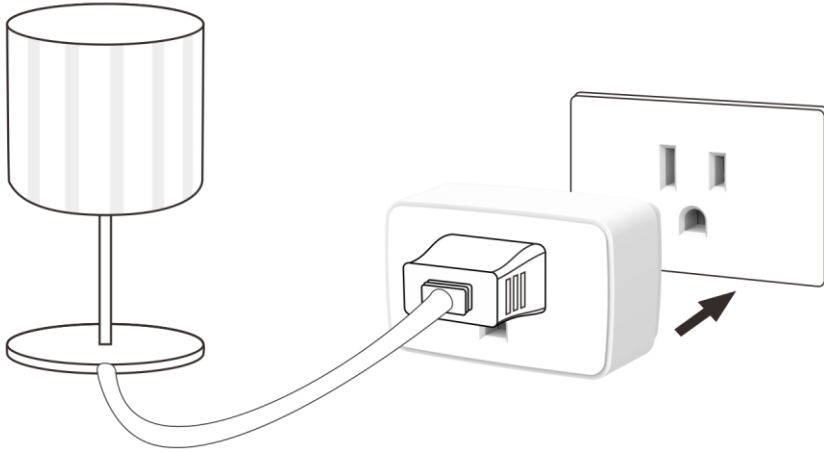
ARC Code switch system product range

## 2. Pairing / Un-pairing Device

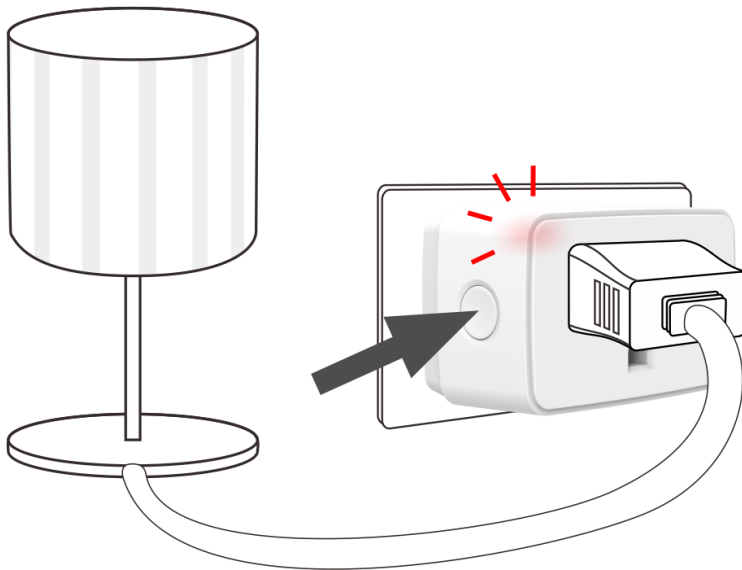
### **PAIRING**

Pairing using **LEARNING MODE**:

1. Plug in lamp / electronic device into socket switch then socket switch into an electrical outlet. (LED will light up for 5 seconds then turns OFF representing in standby mode)



2. Press 'Pair Button' once (LED will start to flash), with the remote control press the 'ON' button intend to be paired; LED on socket switch will quick flash 5 times to confirm that the remote control is now paired.



**NOTE:** If no signal is received from a remote control within 60 seconds time frame then the socket switch will automatically exit learning mode without pairing the device.

## UN-PAIRING

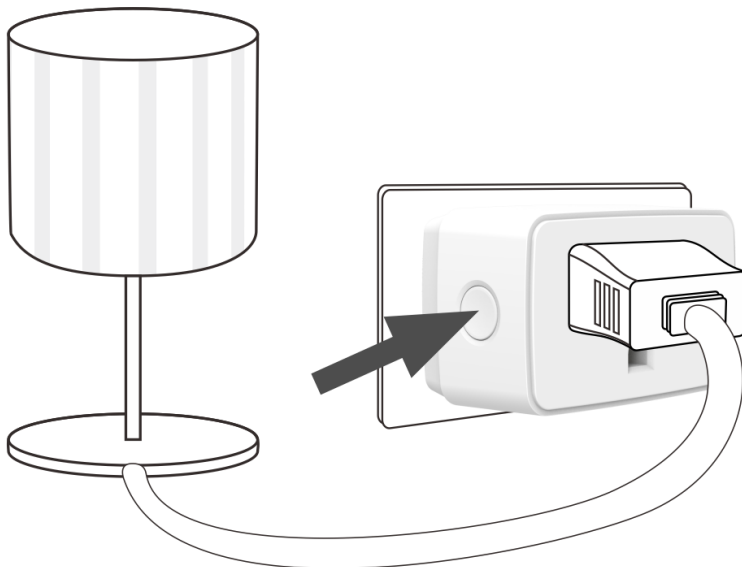
### **Removing single Device:**

1. Press 'Pair Button' once (LED will start to flash), with the remote control press the 'OFF' button intend to be un-paired; LED on socket switch will quick flash 2 times to confirm that the remote control is now un-paired.

## CLEARING ALL MEMORY

Removing all memory stored in the socket switch.

1. Press and hold 'Pair Button' for 10 seconds.



2. The LED on socket switch will flash three times to indicate all memory are cleared.

## 4. Operations

### **Remote Control ON & OFF**

To pair with a remote control prior to compatible use.

Press ON button of the remote control, socket switch connected load will turn ON, LED on socket switch will turn ON then OFF straight after.

Press OFF button of the remote control, socket switch connected load will turn OFF, LED on socket switch will turn ON then OFF straight after.

### 3. Specifications

Input Rating:	120V~60Hz
Output Rating:	1800W (Resistive Load)
Radio Frequency:	433.92MHz
Power consumption:	<1W
Environment Temperature: Range:	0-40 °C up to 50 m indoors (Depends on building materials)
Dimension (L x W x H)	60 x 30 x 31mm
Weight:	60 g

#### **NOTE**

- Please leave minimum of 1.5 meters in-between 2 or more socket switch.