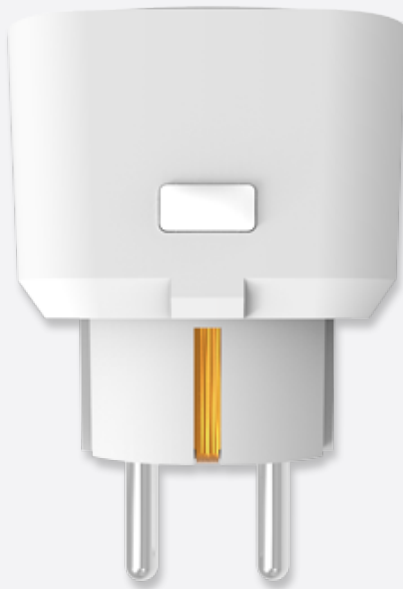
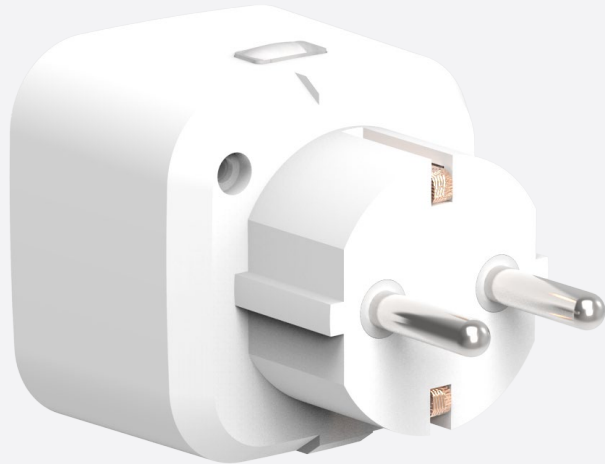


ZIGBEE UNIVERSAL DIMMER SOCKET SWITCH

ZIGBEE 3.0

ZBYC-250





ZIGBEE DIMMER SOCKET SWITCH SCHUKO PLUG

ZIGBEE 3.0

ZigBee Dimmer socket switch, controlled by control panel app or directly by ZigBee remote, Transform your electronic devices to wireless control device smart, and make the device work on schedule.

Voice control and compatible with Amazon Alexa and Google Assistance.

ZigBee dimmer socket switch can be used as range extender, resulting in a more stable connection over longer distances

FEATURES

- ZigBee Dimmer socket switch based on latest ZigBee 3.0 protocol.
- Simple Join Mode application or TouchLink commissioning.
- Supports self-forming Zigbee network without coordinator.

TECHNICAL DATA

- Input Rating: 230V~50Hz
- Output Rating: 3W - 250W Max. Incandescent Lamp (Resistive Load).
- Radio Frequency: 2.4GHz
- Power Consumption: <1W
- Environment Temperature: 0-40 °C
- Range: Up to 50 Meter range (Depends on building materials.)

SPECIFICATION

- Dimension (W x H x D): 53 x 53 x 58 mm
- Weight: 60g